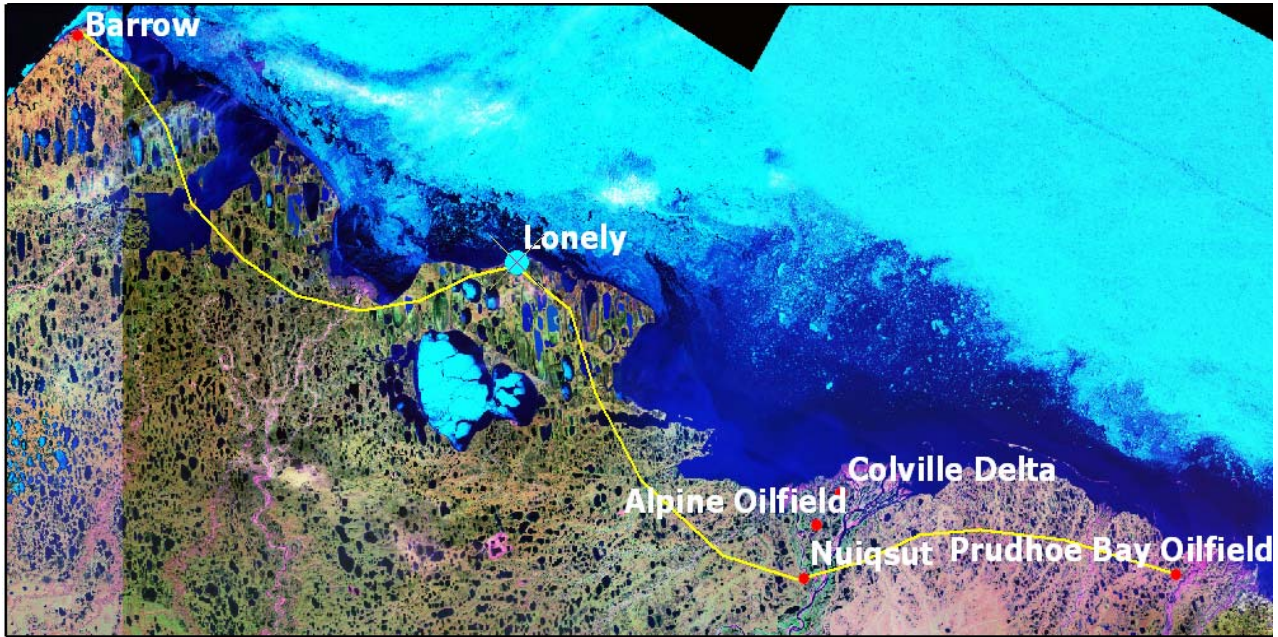


PERMAFROST FIELD TRIP B-2: ARCTIC COASTAL PLAIN

4-9 July 2008, Tour Leader Torre Jorgenson, ABR, Inc.

OVERVIEW:

The six-day post-conference field trip of the Arctic Coastal Plain in northern Alaska will focus on oil and gas development, environmental management related to oil development, coastal permafrost and erosion, thaw lake development, floodplain evolution, and thermokarst. The tour will spend two days each in Prudhoe Bay, the Colville Delta, and Barrow. The trip is limited to 20 people and is expected to cost \$2,200, although efforts are continuing to gain sponsorships to reduce the cost.



PRUDHOE BAY

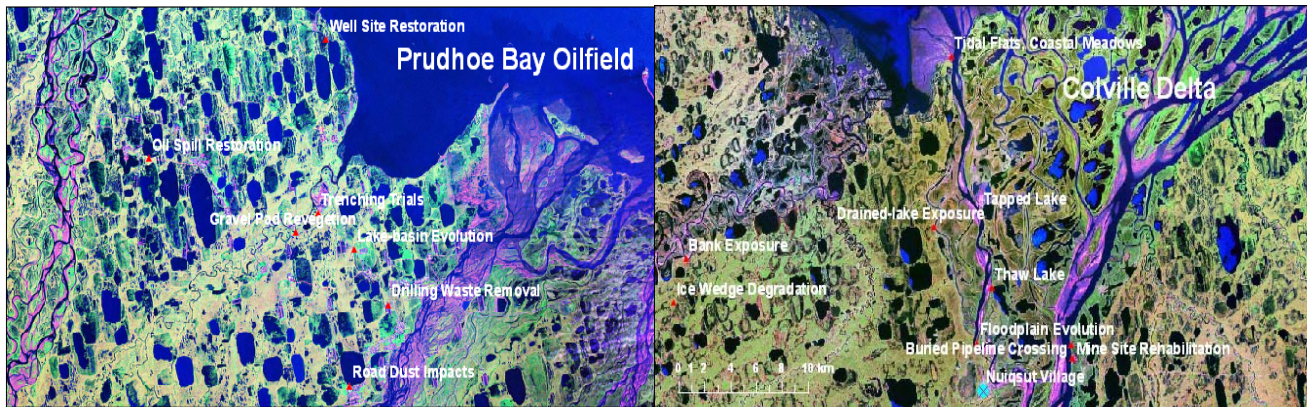
At Prudhoe Bay we will focus on arctic engineering and environmental management at the largest oilfield in the Arctic. Bill Streever, Environmental Manager for BP, will help lead the local tour.

Day 1, 4 July: We will fly from Fairbanks to Prudhoe Bay and begin with a tour of an oil processing facility in Prudhoe Bay, a drill site, and examination of pipelines. To learn about environmental management, we will examine effects of road dust on ice wedges and restoration after an oil spill.

Day 2, 5 July: In the morning, we will assess land rehabilitation techniques on gravel pads and after gravel removal. In the afternoon, we will examine permafrost and ecosystems in drained-lake basins. We will contrast drained lakes (non-thaw lakes) in sandy terrain at Prudhoe Bay with drained thaw lakes in ice-rich silty terrain at Barrow. Evening travel to Nuiqsut to stay at the Kuukpik Hotel.

COLVILLE DELTA

We will spend two days operating out of the native village of Nuiqsut near the head of the Colville Delta to assess oil development on the delta, evolution of permafrost on deltaic floodplains, and ice-wedge degradation on coastal plain deposits. Jess Walker, Louisiana State University, will help lead the local tour and share his knowledge gained from working on the delta for more than 40 years.



Day 3, 6 July: We will examine the development of permafrost and ecosystems associated with floodplain evolution. We will boat down the Niglik Channel to look at bank exposures, core permafrost along a point-bar toposequence, examine thaw lakes and tapped-lake basins, and look at ecosystem development along the coastal fringe.

Day 4, 7 July: We will fly by helicopter to the Fish Creek area in the National Petroleum Reserve – Alaska (NPR-A) to examine a large exposure of coastal plain deposits along Fish Creek and recent degradation of ice wedges in upland terrain. Evening travel to Barrow to stay at the Ukpeagvik Iñupiat Corporation (UIC) research facilities supported by the Barrow Arctic Science Consortium (BASC) <www.arcticscienc.org>.

BARROW

We will spend two days operating out of the UIC-BASC facilities and focus on coastal processes, thaw lake evolution, active layer and permafrost properties, and human development, effects and restoration. Long-time Barrow researchers Ken Hinkel, University of Cincinnati, and Jerry Brown we help lead the Barrow tour. The Barrow visit will be part of the celebration of the 125th anniversary of the first International Polar Year and the Ray Expedition that was based at Barrow in 1882-1883.

Day 5, 8 July: After a tour of the BASC facilities, we examine ice-wedges a 20-ft deep shaft to examine permafrost characteristics of older coastal plain deposits. In the afternoon, we will examine permafrost evolution associated with drained lakes, impacts of snow fences, and visit the city of Barrow, Chukchi Sea erosion and the site of the Ray Expedition. Evening lecture and visit in the local museum.

Day 6, 9 July: In the morning we will visit climate-change and ecosystem related projects and facilities in and adjacent to the Barrow Environmental Observatory (BEO). In the afternoon, we will focus on coastal processes along Elson Lagoon and long-term active layer and permafrost monitoring sites. In the evening, we will fly back to Fairbanks or Anchorage..

